

TEST REPORT

No: ACCHL260000721

Issue Date: 08-Jan-2026 Page 1 of 13

THAI HONG PLASTIC INDUSTRY CO., LTD.

30/9 MOO 8, SUKSAWAT RD., T.NAIKLONGBANGPLAKOD, A.PHRASAMUTJADEE, SAMUTPRAKARN, 10290 THAILAND

The following sample(s) was/were submitted and identified by the client as:

Sample Name : HD,PE (Recycle)
Sample Description : Plastic Film
Material Type : LDPE
Manufacturer/Vendor : Thaihong Plastic Industry Co., Ltd.
Country of Origin : Thailand

The following sample(s) was/were identified by SGS as:

Sample Number : ACC25-0003991-0001
Sample Condition : Sample is contained in plastic bag.
Quantity Submitted : 1 bag
Sample Received Date : Dec 29 2025
Testing Period : Dec 29 2025 - Jan 08 2026
Test Requested : In accordance with the ELV Directive 2000/53/EC and its amendment directives.
Selected test (s) as requested by client.
Test Method(s) : Please refer to next page(s)
Test Result(s) : Please refer to next page(s)
Conclusion : Base on the performed tests on submitted sample(s),the test results of Cadmium (Cd),Lead (Pb),Mercury (Hg),Hexavalent chromium (Cr-VI) comply with the limits as set by the Article 4 (2) of ELV Directive 2000/53/EC where the decision rules based on simple acceptance which the probability of false accept may be as high as 50% in case the results is exactly on the tolerance limit.

Signed for and on behalf of
SGS (Thailand) Limited



Anchalee Wunnaphuek
Acting Chemical Laboratory Manager

FOLDER NUMBER : ACC25-0003991

984258

This document is issued by the Company subject to its General Conditions of Service printed overleaf, available on request or accessible at <http://www.sgs.com/en/terms-and-conditions.aspx> and , for electronic format documents, subject to Terms and Conditions for Electronic Documents at <http://www.sgs.com/en/terms-and-conditions/terms-e-document.aspx>.

Attention is drawn to the limitation of liability, indemnification and jurisdiction issues defined therein. Any holder of this document is advised that information contained hereon reflects the Company's findings at the time of its intervention only and within the limits of Client's instructions, if any The Company's sole responsibility is to its Client and this document does not exonerate parties to a transaction from exercising all their rights and obligations under the transaction documents. This document cannot be reproduced except in full, without prior written approval of the Company.

Any unauthorized alteration, forgery or falsification of the content or appearance of this document is unlawful and offenders may be prosecuted to the fullest extent of the law.Unless otherwise stated the results shown in this test report refer only to the sample(s) tested and such sample(s) are retained for 30 days only.

TEST REPORT

No: ACCHL260000721

Issue Date: 08-Jan-2026

Page 2 of 13

Test Result(s) :

Test Item(s)	Unit	Method	Result	MDL	Limit
Lead(Pb)	mg/kg	With reference to IEC 62321-5:2013, analysis was performed by ICP-OES.	ND	2	1000
Cadmium(Cd)	mg/kg	With reference to IEC 62321-5:2013, analysis was performed by ICP-OES.	ND	2	100
Mercury(Hg)	mg/kg	With reference to IEC 62321-4:2013+AMD1:2017, analysis was performed by ICP-OES.	ND	2	1000
Hexavalent Chromium(CrVI)	mg/kg	With reference to IEC-62321-7-2 edition 1.0:2017-03, analysis was performed by UV-Vis. and/or With reference to IEC-62321-5 edition 1.0:2013-6, analysis was performed by ICP-OES	ND	8	1000
Polybromobiphenyl (PBBs)	mg/kg	With reference to IEC 62321-6:2015, analysis was performed by GC-MS.	ND	-	-
Monobromobiphenyl (MonoBB)	mg/kg	With reference to IEC 62321-6:2015, analysis was performed by GC-MS.	ND	5	-
Dibromobiphenyl (DiBB)	mg/kg	With reference to IEC 62321-6:2015, analysis was performed by GC-MS.	ND	5	-
Tribromobiphenyl (TriBB)	mg/kg	With reference to IEC 62321-6:2015, analysis was performed by GC-MS.	ND	5	-
Tetrabromobiphenyl (TetraBB)	mg/kg	With reference to IEC 62321-6:2015, analysis was performed by GC-MS.	ND	5	-
Pentabromobiphenyl (PentaBB)	mg/kg	With reference to IEC 62321-6:2015, analysis was performed by GC-MS.	ND	5	-
Hexabromobiphenyl (HexaBB)	mg/kg	With reference to IEC 62321-6:2015, analysis was performed by GC-MS.	ND	5	-
Heptabromobiphenyl (HeptaBB)	mg/kg	With reference to IEC 62321-6:2015, analysis was performed by GC-MS.	ND	5	-
Octabromobiphenyl (OctaBB)	mg/kg	With reference to IEC 62321-6:2015, analysis was performed by GC-MS.	ND	5	-
Nonabromobiphenyl (NonaBB)	mg/kg	With reference to IEC 62321-6:2015, analysis was performed by GC-MS.	ND	5	-
Decabromobiphenyl (DecaBB)	mg/kg	With reference to IEC 62321-6:2015, analysis was performed by GC-MS.	ND	5	-
Polybromodiphenyl ether(PBDEs)	mg/kg	With reference to IEC 62321-6:2015, analysis was performed by GC-MS.	ND	-	-

FOLDER NUMBER : ACC25-0003991

984258

This document is issued by the Company subject to its General Conditions of Service printed overleaf, available on request or accessible at <http://www.sgs.com/en/terms-and-conditions.aspx> and , for electronic format documents, subject to Terms and Conditions for Electronic Documents at <http://www.sgs.com/en/terms-and-conditions/terms-e-document.aspx>.

Attention is drawn to the limitation of liability, indemnification and jurisdiction issues defined therein. Any holder of this document is advised that information contained hereon reflects the Company's findings at the time of its intervention only and within the limits of Client's instructions, if any The Company's sole responsibility is to its Client and this document does not exonerate parties to a transaction from exercising all their rights and obligations under the transaction documents. This document cannot be reproduced except in full, without prior written approval of the Company.

Any unauthorized alteration, forgery or falsification of the content or appearance of this document is unlawful and offenders may be prosecuted to the fullest extent of the law. Unless otherwise stated the results shown in this test report refer only to the sample(s) tested and such sample(s) are retained for 30 days only.

TEST REPORT

No: ACCHL260000721

Issue Date: 08-Jan-2026

Page 3 of 13

Test Item(s)	Unit	Method	Result	MDL	Limit
Monobromodiphenyl ether (MonoBDE)	mg/kg	With reference to IEC 62321-6:2015, analysis was performed by GC-MS.	ND	5	-
Dibromodiphenyl ether (DiBDE)	mg/kg	With reference to IEC 62321-6:2015, analysis was performed by GC-MS.	ND	5	-
Tribromodiphenyl ether (TriBDE)	mg/kg	With reference to IEC 62321-6:2015, analysis was performed by GC-MS.	ND	5	-
Tetrabromodiphenyl ether (TetraBDE)	mg/kg	With reference to IEC 62321-6:2015, analysis was performed by GC-MS.	ND	5	-
Pentabromodiphenyl ether (PentaBDE)	mg/kg	With reference to IEC 62321-6:2015, analysis was performed by GC-MS.	ND	5	-
Hexabromodiphenyl ether (HexaBDE)	mg/kg	With reference to IEC 62321-6:2015, analysis was performed by GC-MS.	ND	5	-
Heptabromodiphenyl ether (HeptaBDE)	mg/kg	With reference to IEC 62321-6:2015, analysis was performed by GC-MS.	ND	5	-
Octabromodiphenyl ether (OctaBDE)	mg/kg	With reference to IEC 62321-6:2015, analysis was performed by GC-MS.	ND	5	-
Nonabromodiphenyl ether (NonaBDE)	mg/kg	With reference to IEC 62321-6:2015, analysis was performed by GC-MS.	ND	5	-
Decabromodiphenyl ether (DecaBDE)	mg/kg	With reference to IEC 62321-6:2015, analysis was performed by GC-MS.	ND	5	-
Hexabromocyclododecane (HBCDD)#	mg/kg	With reference to IEC 62321-9:2021. Analysis was perform by GC/MS.	ND	20	-
Perfluorooctane sulfonates (PFOS)#	mg/kg	With reference to EN 17681-1:2025, analysis was performed by HPLC-MS or LC-MS/MS.	ND	1	-
Perfluorooctane Sulfonamide(PFOA)#	mg/kg	With reference to EN 17681-1:2025, analysis was performed by HPLC-MS or LC-MS/MS.	ND	1	-
2-(N-methylperfluoro-1-octane sulfonamido) - ethanol (N-MeFOSE)#	mg/kg	With reference to EN 17681-1:2025, analysis was performed by HPLC-MS or LC-MS/MS.	ND	1	-
2-(N-ethylperfluoro-1-octane sulfonamido) - ethanol (N-EtFOSE)#	mg/kg	With reference to EN 17681-1:2025, analysis was performed by HPLC-MS or LC-MS/MS.	ND	1	-
N-Methyl-Perfluorooctane sulfonamide(N-Me-FOSA)#	mg/kg	With reference to EN 17681-1:2025, analysis was performed by HPLC-MS or LC-MS/MS.	ND	1	-

FOLDER NUMBER : ACC25-0003991

984258

This document is issued by the Company subject to its General Conditions of Service printed overleaf, available on request or accessible at <http://www.sgs.com/en/terms-and-conditions.aspx> and , for electronic format documents, subject to Terms and Conditions for Electronic Documents at <http://www.sgs.com/en/terms-and-conditions/terms-e-document.aspx>.

Attention is drawn to the limitation of liability, indemnification and jurisdiction issues defined therein. Any holder of this document is advised that information contained hereon reflects the Company's findings at the time of its intervention only and within the limits of Client's instructions, if any. The Company's sole responsibility is to its Client and this document does not exonerate parties to a transaction from exercising all their rights and obligations under the transaction documents. This document cannot be reproduced except in full, without prior written approval of the Company.

Any unauthorized alteration, forgery or falsification of the content or appearance of this document is unlawful and offenders may be prosecuted to the fullest extent of the law. Unless otherwise stated the results shown in this test report refer only to the sample(s) tested and such sample(s) are retained for 30 days only.

TEST REPORT
No: ACCHL260000721

Issue Date: 08-Jan-2026

Page 4 of 13

Test Item(s)	Unit	Method	Result	MDL	Limit
N-ethylperfluoro-1-octane sulfonamide (N-EtFOSA)#	mg/kg	With reference to EN 17681-1:2025, analysis was performed by HPLC-MS or LC-MS/MS.	ND	1	-
Dimethyl Fumarate (DMFu)#	mg/kg	In-house method - solvent extraction. Analysis was conducted by GC/MS	ND	0.1	-
Asbestos					
Actinolite#	--	With reference to EPA 600/R-93/116 method. Analysis was performed by SM and PLM	Negative	-	-
Amosite#	--	With reference to EPA 600/R-93/116 method. Analysis was performed by SM and PLM	Negative	-	-
Anthophyllite#	--	With reference to EPA 600/R-93/116 method. Analysis was performed by SM and PLM	Negative	-	-
Chrysotile#	--	With reference to EPA 600/R-93/116 method. Analysis was performed by SM and PLM	Negative	-	-
Crocidolite#	--	With reference to EPA 600/R-93/116 method. Analysis was performed by SM and PLM	Negative	-	-
Tremolite#	--	With reference to EPA 600/R-93/116 method. Analysis was performed by SM and PLM	Negative	-	-

Test part description

Result : translucent plastic

FOLDER NUMBER : ACC25-0003991

984258

This document is issued by the Company subject to its General Conditions of Service printed overleaf, available on request or accessible at <http://www.sgs.com/en/terms-and-conditions.aspx> and , for electronic format documents, subject to Terms and Conditions for Electronic Documents at <http://www.sgs.com/en/terms-and-conditions/terms-e-document.aspx>.

Attention is drawn to the limitation of liability, indemnification and jurisdiction issues defined therein. Any holder of this document is advised that information contained hereon reflects the Company's findings at the time of its intervention only and within the limits of Client's instructions, if any The Company's sole responsibility is to its Client and this document does not exonerate parties to a transaction from exercising all their rights and obligations under the transaction documents. This document cannot be reproduced except in full, without prior written approval of the Company.

Any unauthorized alteration, forgery or falsification of the content or appearance of this document is unlawful and offenders may be prosecuted to the fullest extent of the law. Unless otherwise stated the results shown in this test report refer only to the sample(s) tested and such sample(s) are retained for 30 days only.

TEST REPORT

No: ACCHL260000721

Issue Date: 08-Jan-2026 Page 5 of 13

Note :

- (a) mg/kg = ppm ; 0.1wt% = 1000 ppm
- (b) ND = Not Detected (Less than MDL)
- (c) MDL = Method Detection Limit
- (d) The result of Hexavalent Chromium (Cr(VI)) is "ND" as the result of Chromium (Cr) is "ND", and confirmation test of Hexavalent Chromium (Cr(VI)) is not required.
- (e) If the Chromium (Cr) content is greater than the MDL of Hexavalent Chromium (Cr(VI)), confirmation test of Hexavalent Chromium (Cr(VI)) is required.
- (f) Negative = Undetectable / Positive = Detectable
- (g) "-" = Not regulated
- (h) Test method as specified by client's request.
- (i) PFOS refer to its salts/derivative including PFOS-K (CAS No.: 2795-39-3), PFOS-Li (CAS No.: 29457-72-5), PFOS-Na (CAS No.: 4021-47-0), PFOS-NH₄ (CAS No.: 29081-56-9), PFOS-NH₂(C₂H₄OH)₂ (CAS No.: 70225-14-8), PFOS-N(C₂H₅)₄ (CAS No.: 56773-42-3), PFOS-N(C₁₀H₂₁)₂(CH₃)₂ (CAS No.: 251099-16-8) and POSF (CAS No.: 307-35-7)
- (j) Test done on client submitted sample

Test(s) marked # on this Report was tested/analyzed by an external laboratory with prior approval of the client.

FOLDER NUMBER : ACC25-0003991

984258

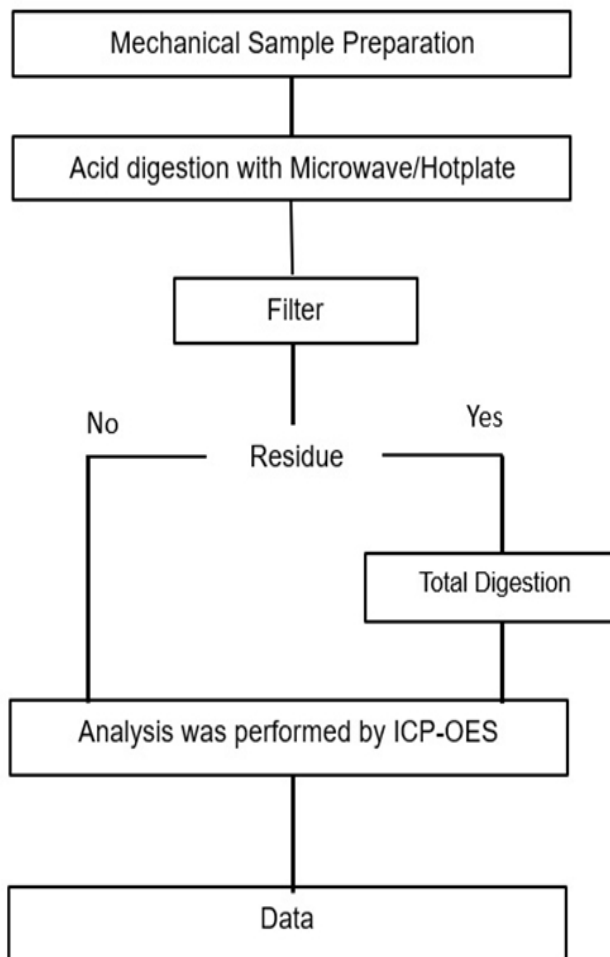
This document is issued by the Company subject to its General Conditions of Service printed overleaf, available on request or accessible at <http://www.sgs.com/en/terms-and-conditions.aspx> and , for electronic format documents, subject to Terms and Conditions for Electronic Documents at <http://www.sgs.com/en/terms-and-conditions/terms-e-document.aspx>.

Attention is drawn to the limitation of liability, indemnification and jurisdiction issues defined therein. Any holder of this document is advised that information contained hereon reflects the Company's findings at the time of its intervention only and within the limits of Client's instructions, if any The Company's sole responsibility is to its Client and this document does not exonerate parties to a transaction from exercising all their rights and obligations under the transaction documents. This document cannot be reproduced except in full, without prior written approval of the Company.

Any unauthorized alteration, forgery or falsification of the content or appearance of this document is unlawful and offenders may be prosecuted to the fullest extent of the law. Unless otherwise stated the results shown in this test report refer only to the sample(s) tested and such sample(s) are retained for 30 days only.

Flow chart of Heavy metal Testing

(Test method : IEC 62321)



FOLDER NUMBER : ACC25-0003991

984258

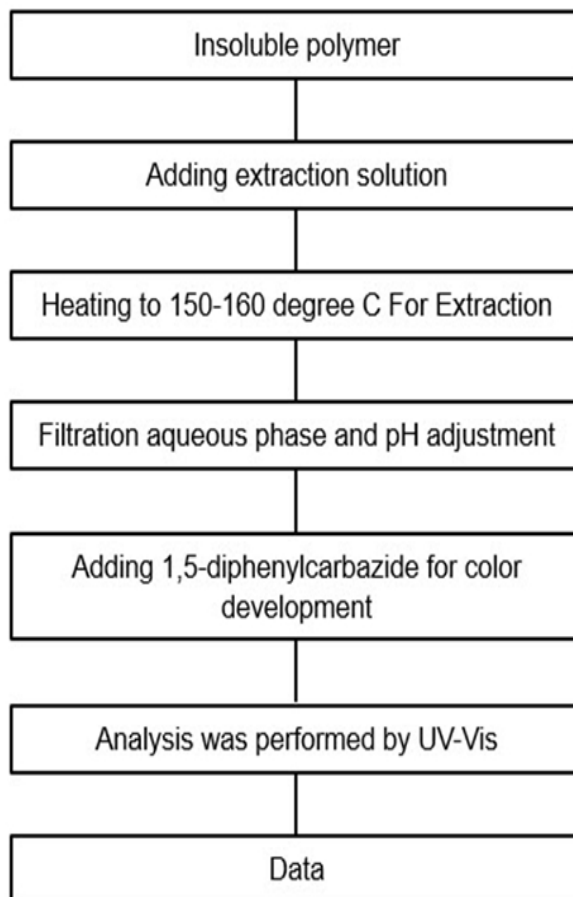
This document is issued by the Company subject to its General Conditions of Service printed overleaf, available on request or accessible at <http://www.sgs.com/en/terms-and-conditions.aspx> and , for electronic format documents, subject to Terms and Conditions for Electronic Documents at <http://www.sgs.com/en/terms-and-conditions/terms-e-document.aspx>.

Attention is drawn to the limitation of liability, indemnification and jurisdiction issues defined therein. Any holder of this document is advised that information contained hereon reflects the Company's findings at the time of its intervention only and within the limits of Client's instructions, if any The Company's sole responsibility is to its Client and this document does not exonerate parties to a transaction from exercising all their rights and obligations under the transaction documents. This document cannot be reproduced except in full, without prior written approval of the Company.

Any unauthorized alteration, forgery or falsification of the content or appearance of this document is unlawful and offenders may be prosecuted to the fullest extent of the law. Unless otherwise stated the results shown in this test report refer only to the sample(s) tested and such sample(s) are retained for 30 days only.

Flow chart of Hexavalent Chromium Testing

(Test method : IEC 62321)



FOLDER NUMBER : ACC25-0003991

984258

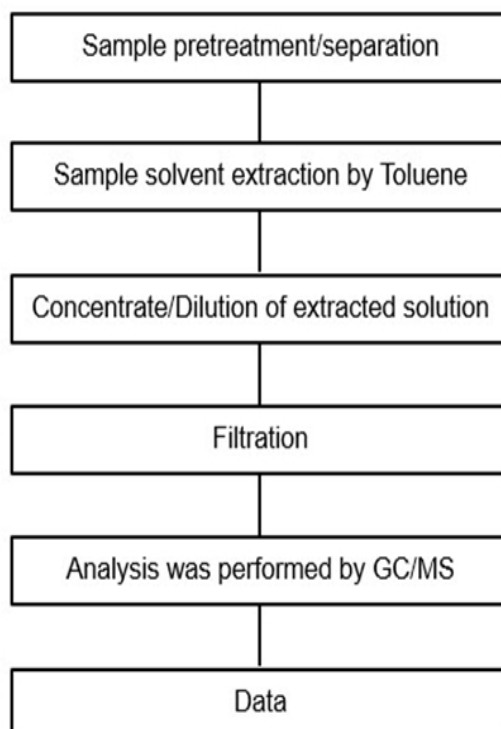
This document is issued by the Company subject to its General Conditions of Service printed overleaf, available on request or accessible at <http://www.sgs.com/en/terms-and-conditions.aspx> and , for electronic format documents, subject to Terms and Conditions for Electronic Documents at <http://www.sgs.com/en/terms-and-conditions/terms-e-document.aspx>.

Attention is drawn to the limitation of liability, indemnification and jurisdiction issues defined therein. Any holder of this document is advised that information contained hereon reflects the Company's findings at the time of its intervention only and within the limits of Client's instructions, if any The Company's sole responsibility is to its Client and this document does not exonerate parties to a transaction from exercising all their rights and obligations under the transaction documents. This document cannot be reproduced except in full, without prior written approval of the Company.

Any unauthorized alteration, forgery or falsification of the content or appearance of this document is unlawful and offenders may be prosecuted to the fullest extent of the law. Unless otherwise stated the results shown in this test report refer only to the sample(s) tested and such sample(s) are retained for 30 days only.

Flow chart of PBBs, PBDEs Testing

(Test method : IEC 62321)



FOLDER NUMBER : ACC25-0003991

984258

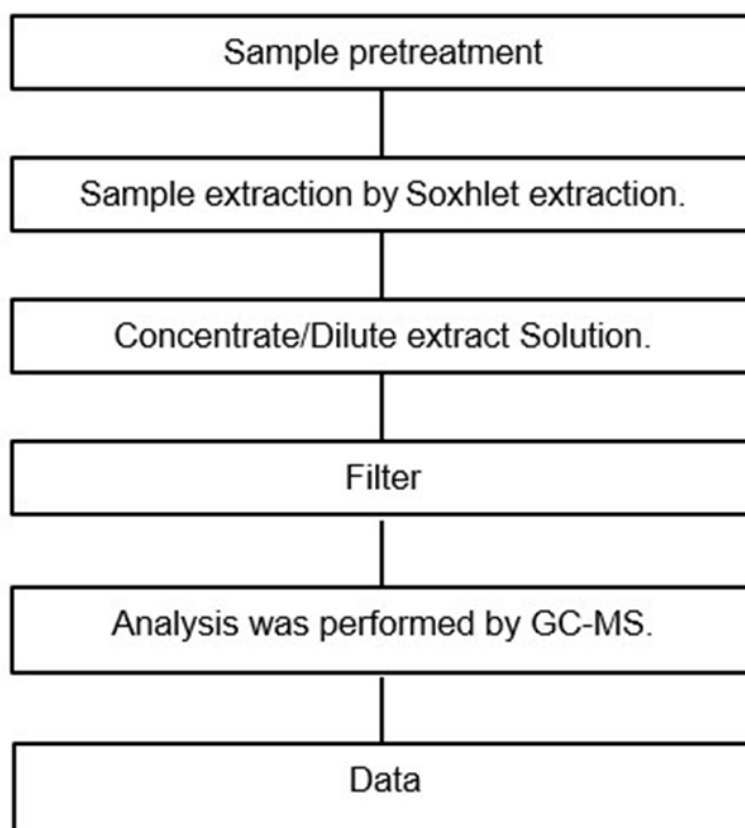
This document is issued by the Company subject to its General Conditions of Service printed overleaf, available on request or accessible at <http://www.sgs.com/en/terms-and-conditions.aspx> and , for electronic format documents, subject to Terms and Conditions for Electronic Documents at <http://www.sgs.com/en/terms-and-conditions/terms-e-document.aspx>.

Attention is drawn to the limitation of liability, indemnification and jurisdiction issues defined therein. Any holder of this document is advised that information contained hereon reflects the Company's findings at the time of its intervention only and within the limits of Client's instructions, if any The Company's sole responsibility is to its Client and this document does not exonerate parties to a transaction from exercising all their rights and obligations under the transaction documents. This document cannot be reproduced except in full, without prior written approval of the Company.

Any unauthorized alteration, forgery or falsification of the content or appearance of this document is unlawful and offenders may be prosecuted to the fullest extent of the law. Unless otherwise stated the results shown in this test report refer only to the sample(s) tested and such sample(s) are retained for 30 days only.

Flow chart of HBCDD Analysis

(Test method : IEC 62321-9 : 2021)



FOLDER NUMBER : ACC25-0003991

984258

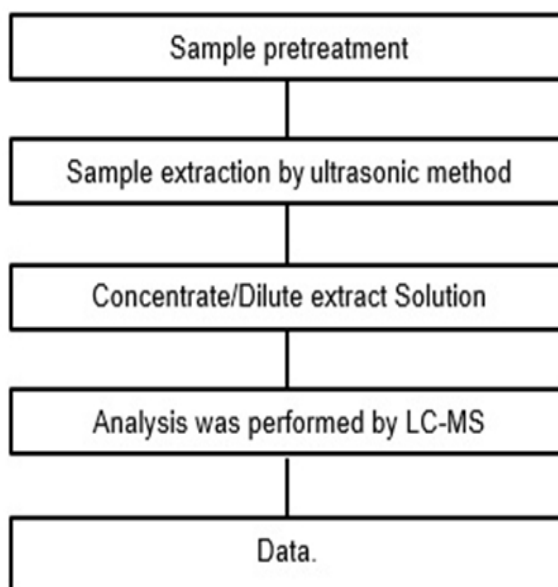
This document is issued by the Company subject to its General Conditions of Service printed overleaf, available on request or accessible at <http://www.sgs.com/en/terms-and-conditions.aspx> and , for electronic format documents, subject to Terms and Conditions for Electronic Documents at <http://www.sgs.com/en/terms-and-conditions/terms-e-document.aspx>.

Attention is drawn to the limitation of liability, indemnification and jurisdiction issues defined therein. Any holder of this document is advised that information contained hereon reflects the Company's findings at the time of its intervention only and within the limits of Client's instructions, if any The Company's sole responsibility is to its Client and this document does not exonerate parties to a transaction from exercising all their rights and obligations under the transaction documents. This document cannot be reproduced except in full, without prior written approval of the Company.

Any unauthorized alteration, forgery or falsification of the content or appearance of this document is unlawful and offenders may be prosecuted to the fullest extent of the law. Unless otherwise stated the results shown in this test report refer only to the sample(s) tested and such sample(s) are retained for 30 days only.

Flow chart of PFOS Analysis

(Test method : EN 17681-1 : 2025)



FOLDER NUMBER : ACC25-0003991

984258

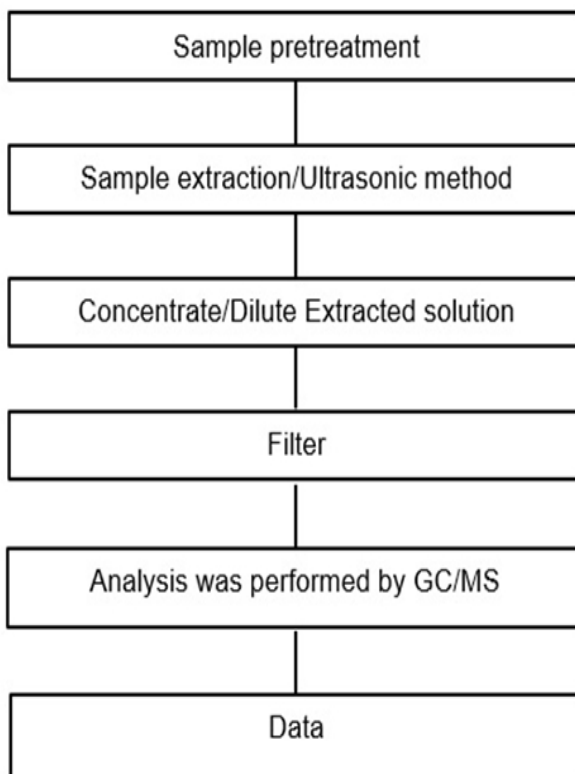
This document is issued by the Company subject to its General Conditions of Service printed overleaf, available on request or accessible at <http://www.sgs.com/en/terms-and-conditions.aspx> and , for electronic format documents, subject to Terms and Conditions for Electronic Documents at <http://www.sgs.com/en/terms-and-conditions/terms-e-document.aspx>.

Attention is drawn to the limitation of liability, indemnification and jurisdiction issues defined therein. Any holder of this document is advised that information contained hereon reflects the Company's findings at the time of its intervention only and within the limits of Client's instructions, if any The Company's sole responsibility is to its Client and this document does not exonerate parties to a transaction from exercising all their rights and obligations under the transaction documents. This document cannot be reproduced except in full, without prior written approval of the Company.

Any unauthorized alteration, forgery or falsification of the content or appearance of this document is unlawful and offenders may be prosecuted to the fullest extent of the law. Unless otherwise stated the results shown in this test report refer only to the sample(s) tested and such sample(s) are retained for 30 days only.

Flow chart of Dimethyl Fumarate Analysis

(Test method : In-house method)



FOLDER NUMBER : ACC25-0003991

984258

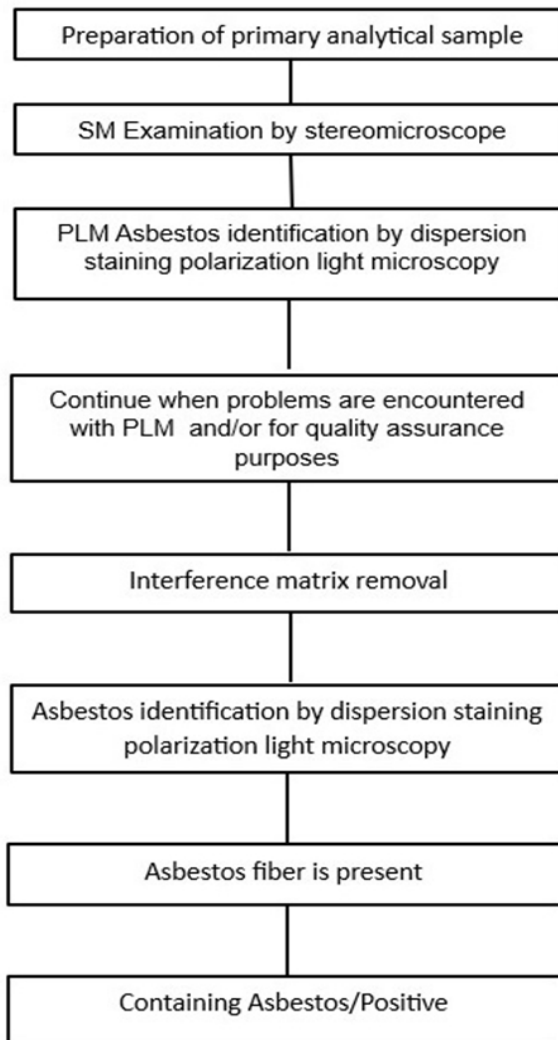
This document is issued by the Company subject to its General Conditions of Service printed overleaf, available on request or accessible at <http://www.sgs.com/en/terms-and-conditions.aspx> and , for electronic format documents, subject to Terms and Conditions for Electronic Documents at <http://www.sgs.com/en/terms-and-conditions/terms-e-document.aspx>.

Attention is drawn to the limitation of liability, indemnification and jurisdiction issues defined therein. Any holder of this document is advised that information contained hereon reflects the Company's findings at the time of its intervention only and within the limits of Client's instructions, if any The Company's sole responsibility is to its Client and this document does not exonerate parties to a transaction from exercising all their rights and obligations under the transaction documents. This document cannot be reproduced except in full, without prior written approval of the Company.

Any unauthorized alteration, forgery or falsification of the content or appearance of this document is unlawful and offenders may be prosecuted to the fullest extent of the law. Unless otherwise stated the results shown in this test report refer only to the sample(s) tested and such sample(s) are retained for 30 days only.

Flow chart of determination Asbestos Testing

(Test method : EPA 600/R-93/116)



FOLDER NUMBER : ACC25-0003991

984258

This document is issued by the Company subject to its General Conditions of Service printed overleaf, available on request or accessible at <http://www.sgs.com/en/terms-and-conditions.aspx> and , for electronic format documents, subject to Terms and Conditions for Electronic Documents at <http://www.sgs.com/en/terms-and-conditions/terms-e-document.aspx>.

Attention is drawn to the limitation of liability, indemnification and jurisdiction issues defined therein. Any holder of this document is advised that information contained hereon reflects the Company's findings at the time of its intervention only and within the limits of Client's instructions, if any The Company's sole responsibility is to its Client and this document does not exonerate parties to a transaction from exercising all their rights and obligations under the transaction documents. This document cannot be reproduced except in full, without prior written approval of the Company.

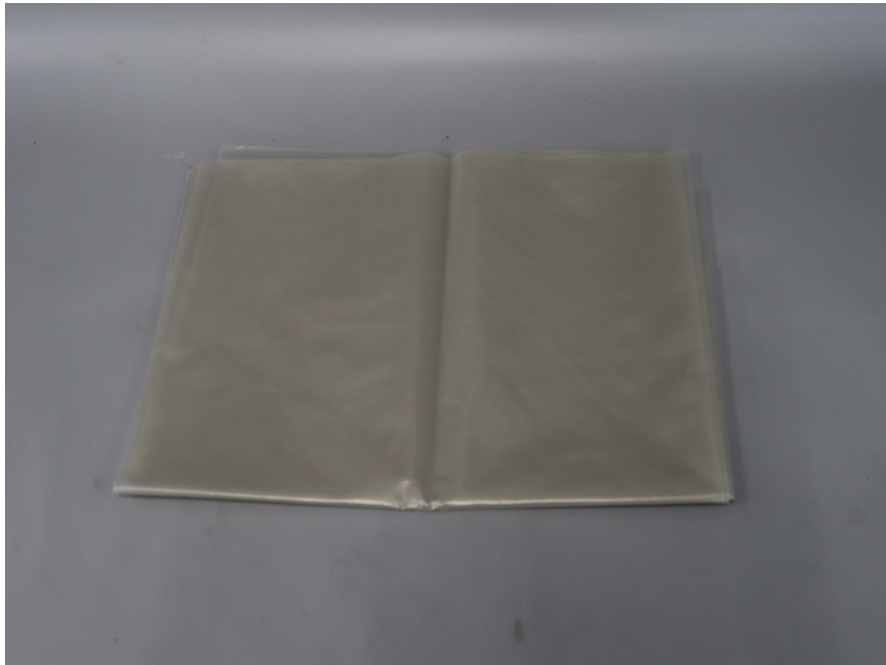
Any unauthorized alteration, forgery or falsification of the content or appearance of this document is unlawful and offenders may be prosecuted to the fullest extent of the law. Unless otherwise stated the results shown in this test report refer only to the sample(s) tested and such sample(s) are retained for 30 days only.

TEST REPORT

No: ACCHL260000721

Issue Date: 08-Jan-2026 Page 13 of 13

Sample Photo:



ACC25-0003991-0001

End of Report

FOLDER NUMBER : ACC25-0003991

984258

This document is issued by the Company subject to its General Conditions of Service printed overleaf, available on request or accessible at <http://www.sgs.com/en/terms-and-conditions.aspx> and , for electronic format documents, subject to Terms and Conditions for Electronic Documents at <http://www.sgs.com/en/terms-and-conditions/terms-e-document.aspx>.

Attention is drawn to the limitation of liability, indemnification and jurisdiction issues defined therein. Any holder of this document is advised that information contained hereon reflects the Company's findings at the time of its intervention only and within the limits of Client's instructions, if any The Company's sole responsibility is to its Client and this document does not exonerate parties to a transaction from exercising all their rights and obligations under the transaction documents. This document cannot be reproduced except in full, without prior written approval of the Company.

Any unauthorized alteration, forgery or falsification of the content or appearance of this document is unlawful and offenders may be prosecuted to the fullest extent of the law. Unless otherwise stated the results shown in this test report refer only to the sample(s) tested and such sample(s) are retained for 30 days only.